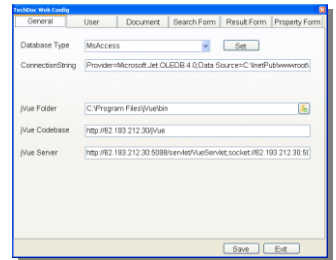


TechDoc WebView: Accessing your documents Online!

TechDoc WebView is a client-server solution that connects to a TechDoc database from an Internet Browser and search and find document records stored in that database. View the document properties, view the documents, print them, use markup and collaborate with other people.

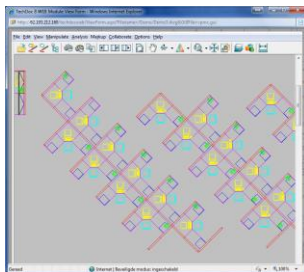
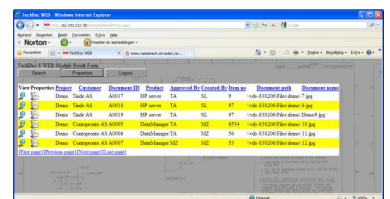
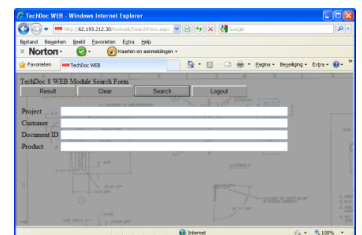
TechDoc WebView Server part consists out of two parts: An administrator module running on the server side and a .Net application running on the server. The users connects to that from an Internet browser.

The Administrator module lets you configure TechDoc WebView, see picture.



Here you set the rights for the users that logon, what search fields they have and what document information they will see from the database.

TechDoc WebView Client. The user types the Username and Password, these then are checked in the database. If the user details are correct the user enters the Search Form. Here the user can search for documents in the TechDoc database the fields he is allowed to use. There are 4 buttons: Result to go to the Result Form, Clear to clear the search information, Search to start a Search and Logout. In the Result screen you see the columns that are set by the administrator in the Web Config tools. Also for each document there are two buttons. The Spy glass will open the document in the Web Viewer. The List button (or the Properties button on top) will open the Properties Form that will show you the properties of the document, as set by the administrator.



After clicking the Spyglass, the document is loaded in the AutoVue Java view applet. Depending on the user rights the document can be Viewed, Printed, Markup can be added and users can use Collaboration to discuss a document online.

For information visit our WEB Site.